



Biometrics



RFID



Barcode



QR Code

Qualica-RD ACRUX

We don't just sell turnstiles. We offer complete access control solutions.

Qualica-RD ACRUX. On this turnstile you can choose the material of the blades; flexible plexiglass 600-900mm or stainless steel arm that can reach 600-1200 mm. Suitable for both indoor and outdoor use.

The body is brushed stainless steel, sturdy, rigid, rustproof, waterproof and durable. It is suitable for people in wheelchairs, bicycles and large volume luggage.

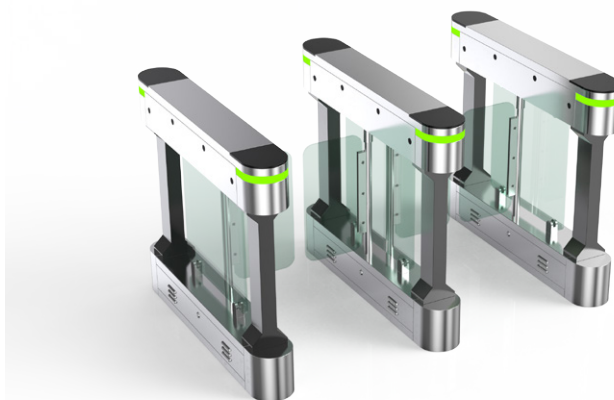
3-year warranty. Ideal for areas with general pedestrian traffic; parks, schools, factories, libraries, movie theaters, gymnasiums, etc.



ACRUX Speed Turnstile

Features

- It is ideal for both indoor and outdoor.
- Automatic reset function: the winch arm will automatically lock within 5 sec (can be adjusted) if the passenger delay is given to the entrance.
- RFID, fingerprint and biometric reading device can be integrated.
- In case of emergency, the arms will open automatically to allow free passage when power off.



Technical Specifications

Frame material	304 stainless steel + Plexiglas arm
Arm material	Transparent Plexiglas or stainless steel 304
Dimensions	1200 *185 * 1020mm
Net weight	60kg/pcs (single core), 80kg/pcs (double core)
Pitch width	- Plexiglass arm support: 600mm(standard), 900mm(handicapped) - Stainless steel arm support: 600mm(standard), 1200mm(handicap)
Pitch direction	Unidirectional and Bidirectional
MCBF	15 million
Power supply	AC220V/110V, 50/60Hz
Operating voltage	24V DC
Power consumption	40W
Operating temperature	-20 °C - 75 °C
Operating humidity	0 ~ 95% (no freezing)
Operating environment	Indoor / Outdoor (shelter)
Flow rate	35-40 persons per minute
LED indicator	Two LED indicators on top: green input. red × no input
Infrared sensor	6 pairs (standard)
Emergency	Automatic opening of arm when power is cut off.
Communication	Dry contact, relay signal, RS485

Dimensions (mm)

